



Our services

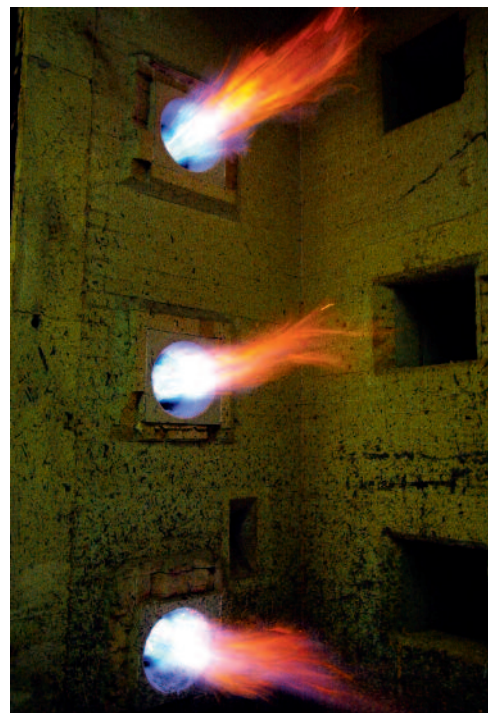
Reaction to fire of building products

- Tests and classification according to
- DIN 4102-1: classifications A1, A2, B1 and B2
 - DIN EN 13501-1: classifications A1, A2, B, C, D and E
 - DIN EN 13501-1: classifications for floor coverings A1_{fl}, A2_{fl}, B_{fl}, C_{fl}, D_{fl} and E_{fl}
 - DIN EN 13501-1: classifications A1_L, A2_L, B_L, C_L, D_L, E_L for pipe insulations
 - Large scale fire tests with wall cladding elements
 - DIN EN 13501-5 and DIN 4102-7: External fire exposure to roofs tests with classification B_{roof} (t1) resp. "Harte Bedachung"
 - Issue of approvals as proof of applicability according to the German building regulations
 - Surveillance and certification

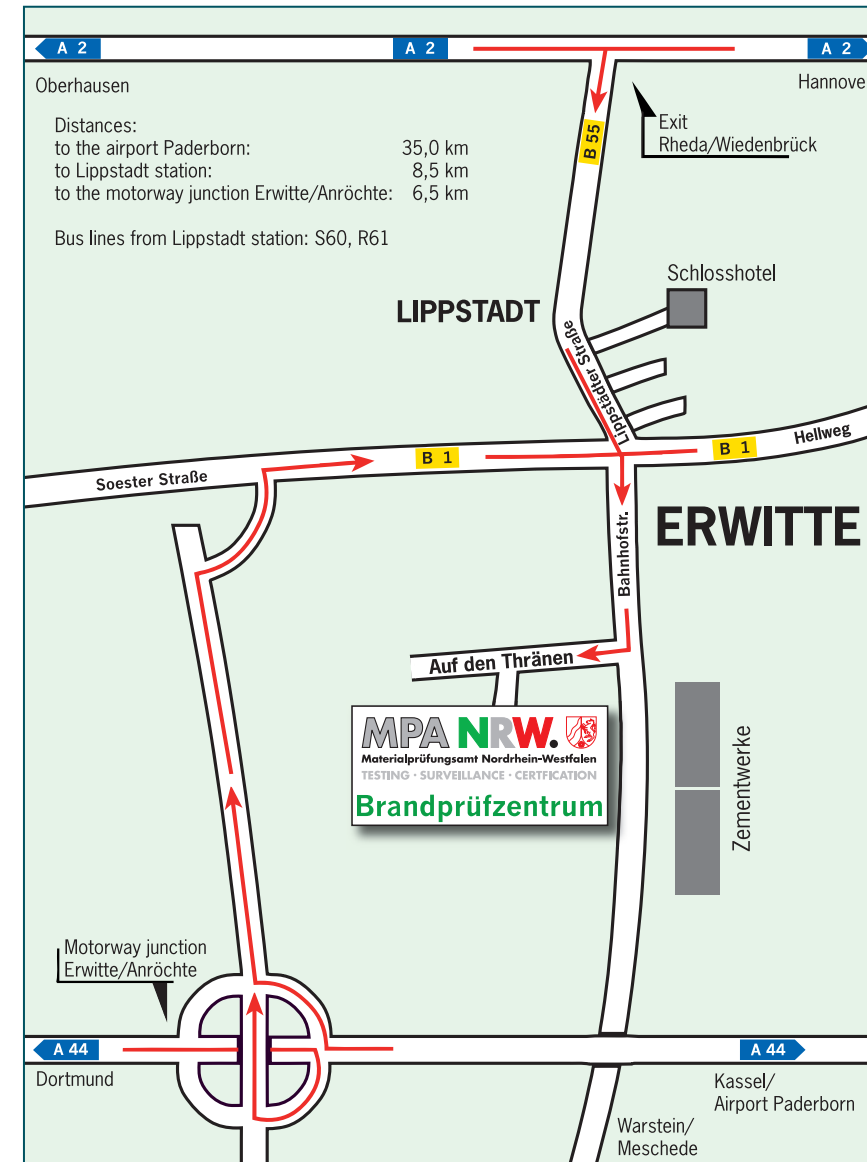


Fire resistance of building components

- Fire doors and fire protection barriers/closures
- Pipe and cable penetrations
- Penetration seal systems
- Natural smoke and heat extraction ventilators (NSHEV)
- Ventilation and smoke extraction ducts
- Other integrity systems
- Expert's statements
- Flame with gas- or oil burner
- Tests in a variety of furnaces for nearly every test setup



Journey



Contact

Materialprüfungsamt Nordrhein-Westfalen
Brandprüfzentrum Erwitte
Auf den Thränen 2
59597 Erwitte
Telefon: 02943/897-0
Telefax: 02943/897-89
E-Mail: erwitte@mpanrw.de
www.mpanrw.de

Materialprüfungsamt Nordrhein-Westfalen
Headquarters
Marsbruchstraße 186
44287 Dortmund
Telefon: 0231/45 02-0
Telefax: 0231/45 85 49
E-Mail: info@mpanrw.de
www.mpanrw.de

05/2011



Fire behaviour of building materials and fire resistance of building components

Fire testing centre Erwitte



The fire testing centre Erwitte

The fire testing centre of MPA NRW in Erwitte is an official centre for fire tests and has specialised in testing building materials and building components. Its testing facilities allow the implementation of all standardised fire tests for the classification of building materials and building components. Furthermore, non-standardized special tests according to special fire protection issues can also be carried out.

Besides testing facilities according to national standards we also have the equipment and the knowhow for the application of European standards in this field.



Any fire test required by national and EU standards can be carried out here: the fire testing centre of MPA NRW in Erwitte

The fire protection tests in the fire testing centre are conducted according to highest environmental standards. Flue gases are cleaned in post-combustion facilities (at 1,200°C), wet scrubber facilities and absorption filters.

MPA NRW has been nationally approved as body for testing, surveillance and certification of building products according to section 28 (1) of the building regulations NRW. For the European Market MPA NRW has been notified by the European Commission and is thus acknowledged for building products according to European standards and European technical certifications.

The testing laboratories in the fire testing centre Erwitte have been accredited according to DIN EN ISO/IEC 17025.

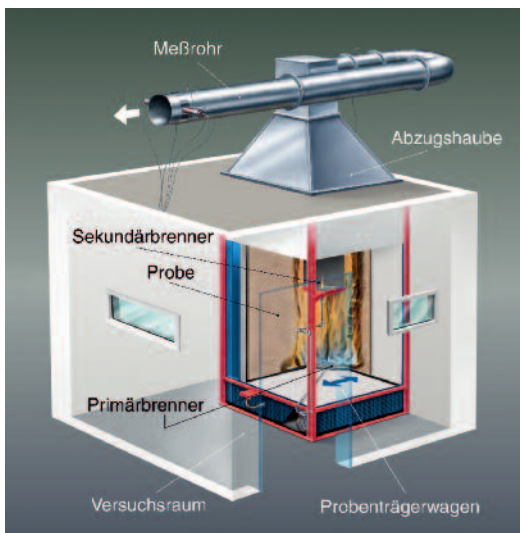
Fire behaviour of building materials and components

■ Building materials

■■■ MPA NRW is accredited as a centre for testing, surveillance and certification of the fire behaviour of building materials and is a member of EGOLF*.



Testing the fire behaviour of floor coverings with the "Radiant Panel Test" according to DIN EN ISO 9239-1 or DIN 4102-14

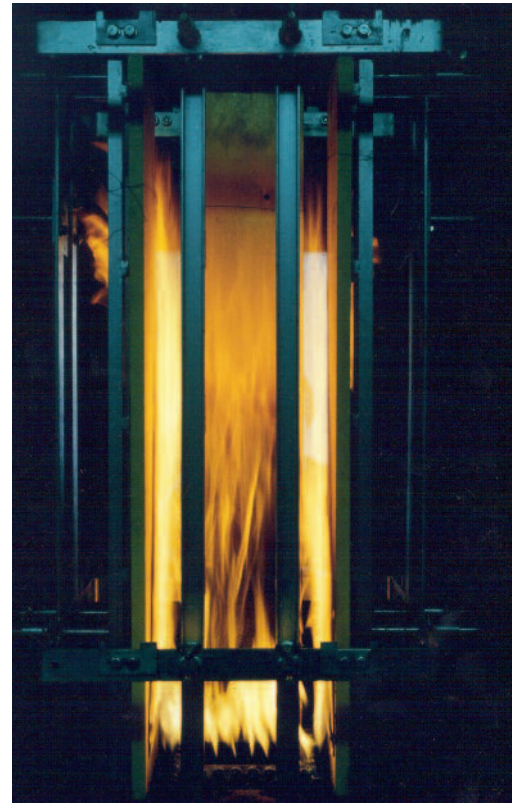


Test rig for the European test procedure "Single Burning Item (SBI) Test" according to DIN EN 13823



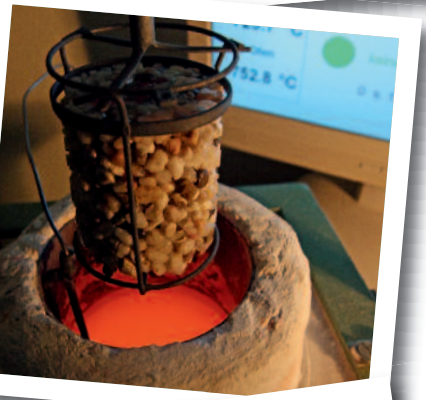
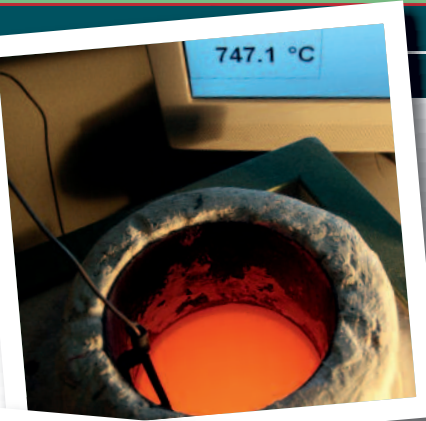
Large-scale test in actual size for wall cladding elements

*EGOLF: European Group of Official Laboratories for Fire Testing



"Brandschacht"-test for B1-classification according to DIN 4102-1

Ignitability test according to DIN EN ISO 11925-2 or DIN 4102-1, building material class B2



European test procedure "non-combustibility furnace" according to DIN EN ISO 1182

■ Building components

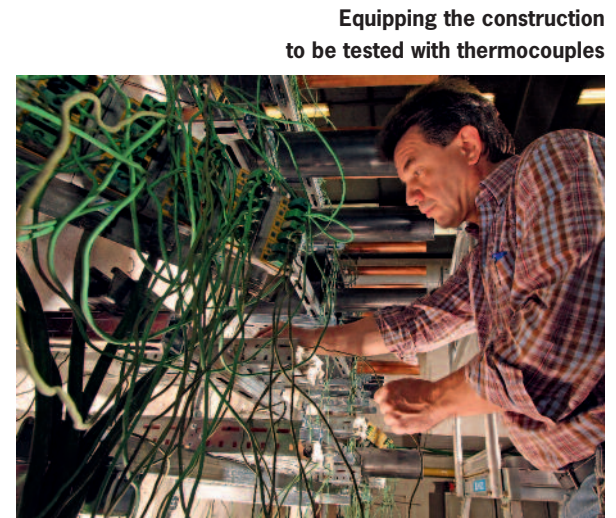
■■■ MPA NRW is one of the leading companies for fire resistant tests on building components



Shortly after the start of a fire test with oil flame treatment on a glazing of 3 x 3 metres



Checking a 5 metres wide and 4 metres high test specimen before the fire test



Equipping the construction to be tested with thermocouples



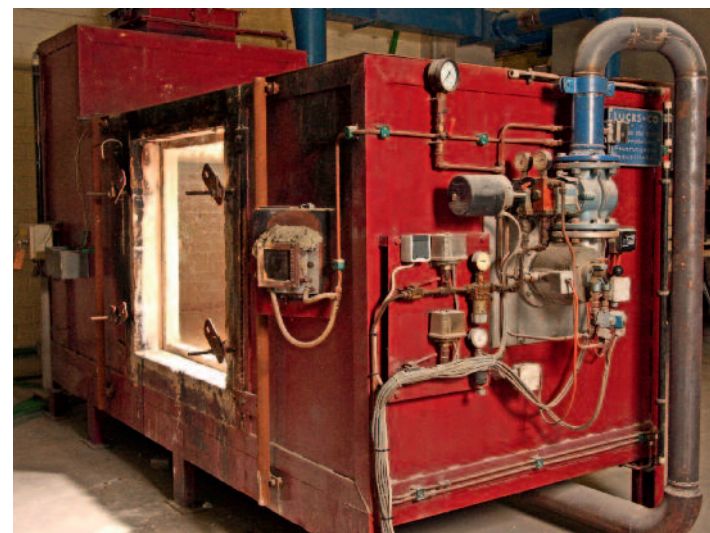
The only furnace in Germany according to DIN 4102-6 for testing horizontal and vertical ventilation ducts



Two furnaces according to DIN 4102-8 comparison and surveillance tests



Multifunctional furnace with gas flame treatment for European tests on vertical and horizontal components



"Metre furnace" with two vertical openings 1 x 1 metre and a horizontal opening 1 x 1.3 metres for comparison and classification tests with oil flame treatment